

AB 1550, the Climate Investments for CA Communities Act: Increased Benefits for Senate District 5

SD 5 and the surrounding area already benefit from Greenhouse Gas Reduction Fund investments. AB 1550 takes the next step, benefitting *over 129,000 households in the district with incomes 80% of the state median or less.*

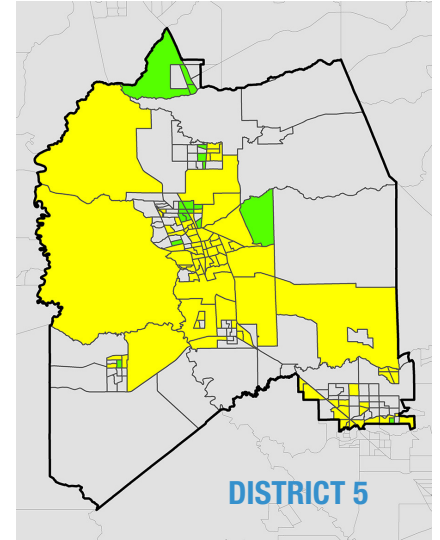
SD 5 is disproportionately impacted by poverty



Based on their incomes, over 129,000 households would be eligible for benefits under AB 1550, *whether or not they live in designated Disadvantaged Communities.*

Available benefits include home weatherization, clean vehicle rebates, public transportation, affordable housing near transit, urban forestry, low-cost solar power and more.

SD 5 is disproportionately impacted by air pollution

Both San Joaquin and Stanislaus Counties received “F” grades for particle and ozone pollution in the American Lung Association’s 2016 State of the Air Report.



 Currently eligible for investments through SB 535
 New areas eligible for investments under AB 1550

Already Funded in SD 5

- **\$14,868,891 within the district**
- **\$15,076,818 impacting the district**
- **Over 246,006 metric tons greenhouse gas reduction**

Sample GGRF-funded projects in SD 5

Anchor Village, Stockton: A \$5.9 million grant will build 51 units of affordable housing for low-income veterans and individuals with mental illness. This transit-oriented development, a short walk from major bus lines, will also include a garden and 8,000 square feet of community space for social service offices, gatherings, fitness equipment and bike storage and repair.

BRT Expansion, Stockton: \$6.8 million will allow the San Joaquin Regional Transit District to expand the BRT system -- improving service, reducing travel times and increasing ridership in disadvantaged communities.

Other funded projects will improve and enhance numerous transportation services, including offering free vouchers/rides throughout the year on the GrapeLine Fixed Route Transit System in Lodi and reducing pollution from ACE’s new Downtown Stockton SJRR/ACE Regional Maintenance Facility; help residents and farmers save water; and plant 5,000 drought-tolerant trees in disadvantaged Modesto neighborhoods.

